



# PASSPORT

KIT

# PASSPORT STAMP STICKERS

*Track all of your trail excursions with our fun stamps!*

Once you visit a specific trail cut out its corresponding sticker along the gray dotted line and glue it to the trail's white box section. It will cover over all QR codes. **Try and visit all 20 trails!**



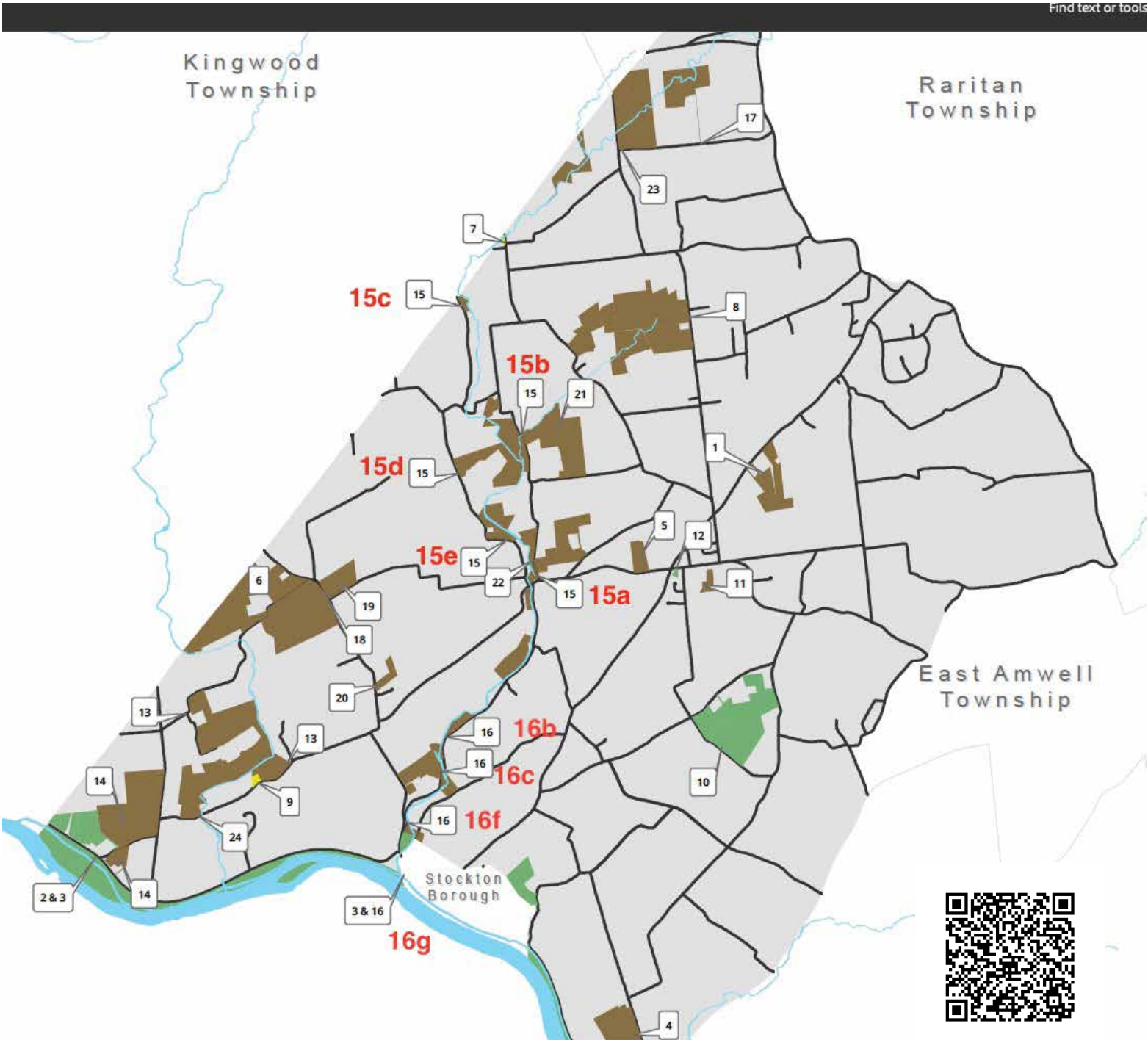
# DELAWARE TWP. TRAILS MAP

## Overview Map for Public Access Open Spaces.

Print map for reference, use the QR code or visit:

[www.delawaretpnj.org/media/attachments/2024/04/30/map-of-public-access-open-spaces.pdf](http://www.delawaretpnj.org/media/attachments/2024/04/30/map-of-public-access-open-spaces.pdf)

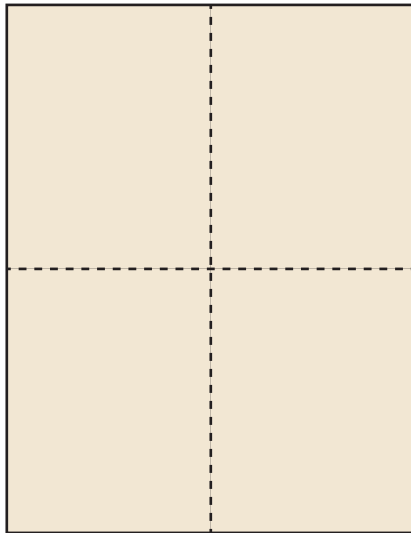
**Please note:** Parking locations may be approximated and entrances to some spaces may be difficult to identify. Use mileage and coordinates to help locate parking. Visit the Open Space site with the QR code below, where you will find more details and links to photos of parking and entrances.



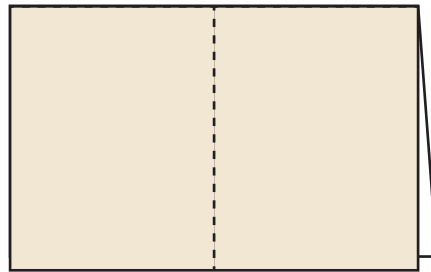
# PASSPORT ASSEMBLY

**Print out all 4 individual sheets to make your passport!**

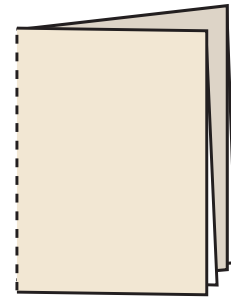
The Passport is made up with 4 individual pages that fold up into quarters, insert into each other, and then stapled together to form a the passport book.



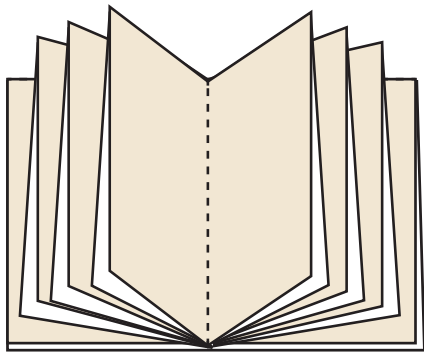
**0 FOLD**  
8.5 X 11 printed page



**1 FOLD**  
(vertical in half printed side  
on the outside)  
FOLDED SIZE:  
8.5 X 5.5



**2 FOLDS**  
(in half again)  
FOLDED SIZE:  
4.25 X 5.5



Inset the 4 (2-folded) pages together to form the Passport book. Make sure page numbers are in the correct order.



Staple all the pages together along the outside cover spine in 3 places to create your passport.



We hope you find this Passport a valuable guide to the exploration of the natural beauty of your own backyard.

The **Open Space Advisory Committee** promotes, coordinates and educates our community on the wise use of Open Space Tax dollars as we continue to help preserve open space and farmlands.

The **preservation of open space, farmland, historic structures and the rural beauty of our township has not happened by chance.** It has happened through a concerted commitment of the community, tax payers and township government, as well as private and public preservation organizations at the county and state level.

**Delaware Township, NJ, has preserved thousands of acres of open space and farmland over the past 40 years** and among those thousands of acres are the 20 publicly accessible destinations in this Passport. Parks, recreation areas, hiking trails through wooded and streamlined preserves, farmland perimeters and historic properties throughout the township are open for your exploration.

### About Open Space in Delaware Township

The **Open Space Passport** fosters appreciation for the township's cultural, ecological, and historic landmarks while promoting the principles of stewardship through the Leave No Trace ethic. Visit: <https://lntr.org> to learn more.

### Leave Only Footsteps; Take Only Pictures

Hunting is permitted on a number of the publicly accessible open spaces in this Passport. Hunting seasons run from early September through March. On state owned land, hunting is not permitted on Sundays. During hunting season, wear brightly colored clothing and hats, stay on trails and consider scheduling your visits to hunting-permitted sites on Sundays. Always practice caution on any trails during hunting season.


### A Note on Hunting Seasons

**Please note:** parking locations may be approximated and entrances to some spaces may be difficult to identify. Use mileage and coordinates to help locate parking. Visit the Open Space site with the QR code, where you will find more details and links to photos of the spaces.



[www.delawaretwpnj.org](http://www.delawaretwpnj.org)

Learn more about Public Access Open Spaces at



Brought to you by  
**THE DELAWARE TOWNSHIP  
 OPEN SPACE ADVISORY COMMITTEE**

570 Rosemont Ringoes Road  
 PO Box 500, Sergeantsville, NJ 08557  
 (609) 397 3240  
[www.delawaretwpnj.org](http://www.delawaretwpnj.org)



**OPEN SPACE  
 EXPLORERS**

**PASSPORT**

**2025**





DATE COMPLETED:



**HIGHLIGHTS:** The trails follow the Wickechoke Creek through dense forest and along meadows and can be combined to create loops and longer hikes. Most sections of the trails are relatively flat, although some sections require walking over uneven ground. Creek crossings are indicated on the trail maps; they can be difficult even when the water is low but can be dangerous when the water is high.

**MILEAGE:** Approx 3 miles of trails

**HUNTING:** Yes

**ADDRESS/PARKING:** Multiple locations along Lower Creek Road. Reference the guide available at the QR code link. Use Lat/Long coordinates with Map App for most accurate locations.

**WICKECHOKE CREEK SOUTHERN TRAILS (MAP #16b, 16c, 16f, 16g)**  
Preserved by New Jersey Conservation Foundation

DATE COMPLETED:



**HIGHLIGHTS:** A 1/2 mile unmarked trail to a waterfall.

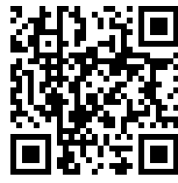
**MILEAGE:** 1/2 mile

**HUNTING:** Yes

**ADDRESS/PARKING:** Gravel area for 1 car to pull in/back out in front of white cable 40.4737 N 74.97713 W Reference the guide available at the QR code link.

**WICKECHOKE CREEK WATERFALL TRAIL (MAP #15c)**  
Preserved by New Jersey Conservation Foundation

DATE COMPLETED:



**HIGHLIGHTS:** Built in 1819, this old stone church is a beautiful example of the federal architectural style used in early 19th century. The building is listed on the State and National Registers of Historic Sites. A cemetery dating from the eighteenth century is nearby. You can enter the church on school trips, by attending one of the special events or by special arrangement.

**MILEAGE:** Unavailable

**HUNTING:** No

**ADDRESS:** 323 Locktown-Sergeantsville Road, Stockton - 40.48542 N 74.97065 W

**LOCKTOWN STONE CHURCH (MAP #7)**  
Preserved by Delaware Township

DATE COMPLETED:



**HIGHLIGHTS:** Comprised of 756 acres across Delaware, Franklin and Kingwood Townships. Hunting and wildlife related activities are allowed. There are limited hiking trails to the High Falls from the parking area and the trails are not well marked or maintained.

**MILEAGE:** 1.8 miles

**HUNTING:** Yes

**ADDRESS:** 235 Kingwood Stockton Rd (Rt 519), Stockton - 40.44769 N 75.00807 W

**LOCKATONG PRESERVE/WILDLIFE MANAGEMENT AREA (MAP #6)**  
Preserved by The State of New Jersey

**PRALL'S QUARRY (MAP #16g)**

Preserved by New Jersey Conservation Foundation

**ADDRESS:** 24 Risler St (Rt 29), Stockton, NJ (Across from Prallsville Mill) - 40.40967 N 74.98509 W

**PARKING:** Prallsville Mill parking lot

**HIGHLIGHTS:** Hidden behind the John Prall House is a surprising sight: a serene, water-filled and majestic former stone quarry, with a trail leading up along its western edge. Stones from this quarry were said to be used to build the footings for the New Hope/Lambertville Free Bridge. Trail may not be well-maintained. Stay away from the edge.

**MILEAGE:** Approx 1/2 mile

**HUNTING:** Yes



DATE COMPLETED:

**D & R CANAL STATE PARK - WOODLANDS (MAP #4)**

Preserved by The State of New Jersey

**ADDRESS:** 144 Seabrook Road, Lambertville - 40.38993 N, 74.95123 W

**PARKING:** Gravel/dirt cul-de-sac for parking.

**HIGHLIGHTS:** Walking and nature observance are permitted on this 147-acre property comprising fields and woodlands, but there are no designated trails. There is a bench in the parking area that overlooks the field. From the upper farm field, you can see Bowmans' Tower. Perimeter is mowed once per year, so best visited from late winter to spring while the grass is short.

**MILEAGE:** Unavailable

**HUNTING:** Yes



DATE COMPLETED:

**PAVLICA ROAD FARM - PINE HILL CEMETERY (MAP #21)**

Preserved by New Jersey Conservation Foundation

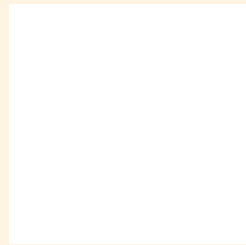
**ADDRESS/PARKING:** 39 Pine Hill Rd, Stockton - 40.46176 N 74.96761 W

The trailhead is across the road from the parking area

**HIGHLIGHTS:** 94-acre property comprised of woodlands and fields. There is a marked trail in the woods along Plum Brook. From the trailhead walk up the rocky hill to access the farm field where there is a seasonal mowed trail connecting to Pavlica Road. The Pine Hill Cemetery, located in the farm field, is where Green Sergeant, builder of the Green Sergeant's Covered Bridge, is buried.

**MILEAGE:** Unavailable

**HUNTING:** Yes



DATE COMPLETED:

**FOODSHED ALLIANCE SAgE FARM PROPERTY (MAP #5)**

Preserved by New Jersey Conservation Foundation

**ADDRESS:** 640 Rosemont-Ringoos Road, Sergeantsville - 40.44632 N, 74.94804 W

**PARKING:** Park at the lot at Town Hall or the farm parking area

**HIGHLIGHTS:** This is one of three Sustainable Agriculture Enterprise (SAGE) sites in New Jersey. SAGE makes farmland more accessible in New Jersey by offering long-term, affordable leases on preserved farmland to farmers who are committed to organic and regenerative growing practices. Walking and nature observance are permitted along the perimeter of the 19-acre farm field, but there are no designated trails.

**MILEAGE:** Unavailable

**HUNTING:** Yes



DATE COMPLETED:

**HUNTING:** No  
**MILEAGE:** 2.5 mile  
 residents and members of the Environmental Commission were planted with the help of students, Jurgensen Road the Delaware Township School Native trees and shrubs the Delaware Township School Native trees and shrubs collaboration between the Environmental Commission and restoration of wetlands and creation of the trail was a Road to the Delaware Township School property. The **HIGHLIGHTS:** This is a 1/2 mile trail connecting Jurgensen the cul-de-sac  
**PARKING:** Gravel/dirt pull over for 2-3 cars at the end of **ADDRESS:** 11 Jurgensen Road, Stockton - 40.44404 N 74.93905 W



DATE COMPLETED:

**SCHOOL MEADOW TRAIL (MAP #11)**  
 Preserved by Delaware Township

**HUNTING:** No  
**MILEAGE:** 2 miles, over gravel, paved and dirt paths walking paths filled with athletic fields, tennis courts, playground and dating back to 18th century, it is now a gem of a park Originally a farm owned by the Rittenhouse family and by Sarah Diltz, a schoolteacher here in the township. Delaware Twp for the benefit of the township's children **HIGHLIGHTS:** Diltz Park was bequeathed in 1985 to **PARKING:** Abundant paved parking **ADDRESS:** 19 Buchanan Road, Stockton - 40.42575 N 74.93401 W



DATE COMPLETED:

**SARAH DILTZ FARM PARK (MAP #10)**  
 Preserved by Delaware Township

**HUNTING:** Yes  
**MILEAGE:** Loop Trail: 1/2 mile, and connecting to Mimi's Trail to the Lockatong Creek and connecting to Mimi's Trail. Trail is a dirt trail traversing several farm fields before descending Rosemont Road, winding through meadows and forest and providing a vista overlooking the Lockatong creek. Ralph Peters Wescott offers an easy to moderate Loop Trail off of Raven Rock-1966 and extended with conservation by the Peters family in 2006. Preserve was established with donations by the Wescott family in **HIGHLIGHTS:** Hunterdon's first County Park, the Westcott **ADDRESS/PARKING:** Ralph Peter's Trail: 63 Strimples Mill Road - 40.42829 N 75.02023 W **Loop Trail:** 70 Raven Rock-Rosemont Road - 40.42222 N 75.00444 W



DATE COMPLETED:

**WESCOTT PRESERVE (MAP #13)**  
 Preserved by Hunterdon Land Trust Alliance, Hunterdon County

**HUNTING:** No  
**MILEAGE:** Unavailable  
 Lighting and other community activities. gatherings such as the Block Party, Tractor Parade, Tree on Rt 604 or in Town Hall parking lot. **HIGHLIGHTS:** 1.5-acre property used for Township wide **PARKING:** Street parking available in the marked spaces **ADDRESS:** 563 Rosemont-Ringoes Road (Rt 604), Sergeantsville - 40.44607 N 74.94319 W



DATE COMPLETED:

**TOWN GREEN (MAP #12)**  
 Preserved by Delaware Township

**WHITE OAK TRAIL (MAP #14)**  
 Preserved by The State of New Jersey

**ADDRESS:** Trailhead is located about 100 feet south of Bull's Island lot; across Rt 29. - 40.41011 N 75.03268 W

**PARKING:** Park at Bulls Island parking lot (2185 Rt 29, Stockton)

**HIGHLIGHTS:** Delaware Township's White Oak Trail winds through approximately 140 acres of preserved woodlands. The trail, named for the prominent white oak tree that represents the final stage of woodland evolution, comprises two sections connected by a short walk along Quarry Road. This trail is maintained by the Delaware Twp Environmental Commission.

**MILEAGE:** 2.2 Miles  
**HUNTING:** Yes



DATE COMPLETED:

**WICKECHEOKE CREEK CENTRAL TRAILS (MAP #15a, 15b, 15d, 15e)**  
 Preserved by NJ Conservation Foundation

**ADDRESS:** Multiple locations along Pine Hill and Upper Creek Roads. Reference the guide available at the QR code link. Use Lat/Long coordinates with Map App for most accurate locations

**HIGHLIGHTS:** In what are some of the most beautiful and wild parts of our township, multiple trails, including the Wickecheoke and Donald and Beverly Jones trails, meander through here. These trails are a work-in-progress. Some are marked better than others and some required stream-crossings may only be accessible when stream levels are low. Practice caution.

**MILEAGE:** Approx 1.5 miles of trails  
**HUNTING:** Yes



DATE COMPLETED:

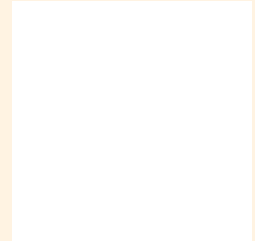
**PLUM BROOK PRESERVE (MAP #8)**  
 Preserved by D&R Greenway

**ADDRESS:** 163 Ferry Road, Stockton - 40.47618 N 74.94143 W

**PARKING:** 163 Ferry Road

**HIGHLIGHTS:** The Plum Brook is a tributary of Wickecheoke Creek. The 311-acre Preserve contains a mixture of mature upland forest, cedar groves, and meadows that support a diverse group of plants and animals, including NJ State threatened and endangered species. There are also nineteenth century stone walls mark the boundaries of old pastures and fields.

**MILEAGE:** Limited unmaintained/unmarked trails  
**HUNTING:** Yes



DATE COMPLETED:

**THE READING SCHOOL (MAP #9)**  
 Preserved by Hunterdon County, Delaware Township

**ADDRESS:** 82 Raven Rock-Rosemont Road, Stockton - 40.42038 N 75.00887 W

**PARKING:** One parking spot to left of school

**HIGHLIGHTS:** The Reading School is a one-room school house built in 1861 to accommodate 60 pupils. The schoolhouse is listed on the New Jersey and National Registers of Historic Places. It is also located within the Wescott Preserve, a beautiful, historic tract of conserved land and the first example of land donated to the county's park system. Special Arrangements needed to enter school.

**MILEAGE:** Unavailable  
**HUNTING:** No



DATE COMPLETED: